

IMAGE OPT[O]NS

Envision with us.

Modular Building Systems





Possible Starts Here

Table of Contents

The Body

b62[®]

360° Concept

Doors

Lighting

Skins

Ready To Go

Kickoff Packs

beCompact

iZi Range

Xtreme Solutions

Pop Solutions

beMatrix Principles

Envision **the possible.**

The beMatrix modular building system offers a plethora of creative finishing options. It combines all the benefits of exhibit and event building systems with the possibilities of made-to-measure solutions.

Almost any kind of shape and construction is conceivable and can be easily created. One single frame allows you to create a multitude of modular concepts.



© Choup's (Silver Partners (BE))

The Body

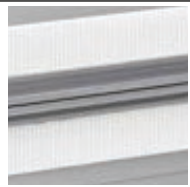
b62 Frame



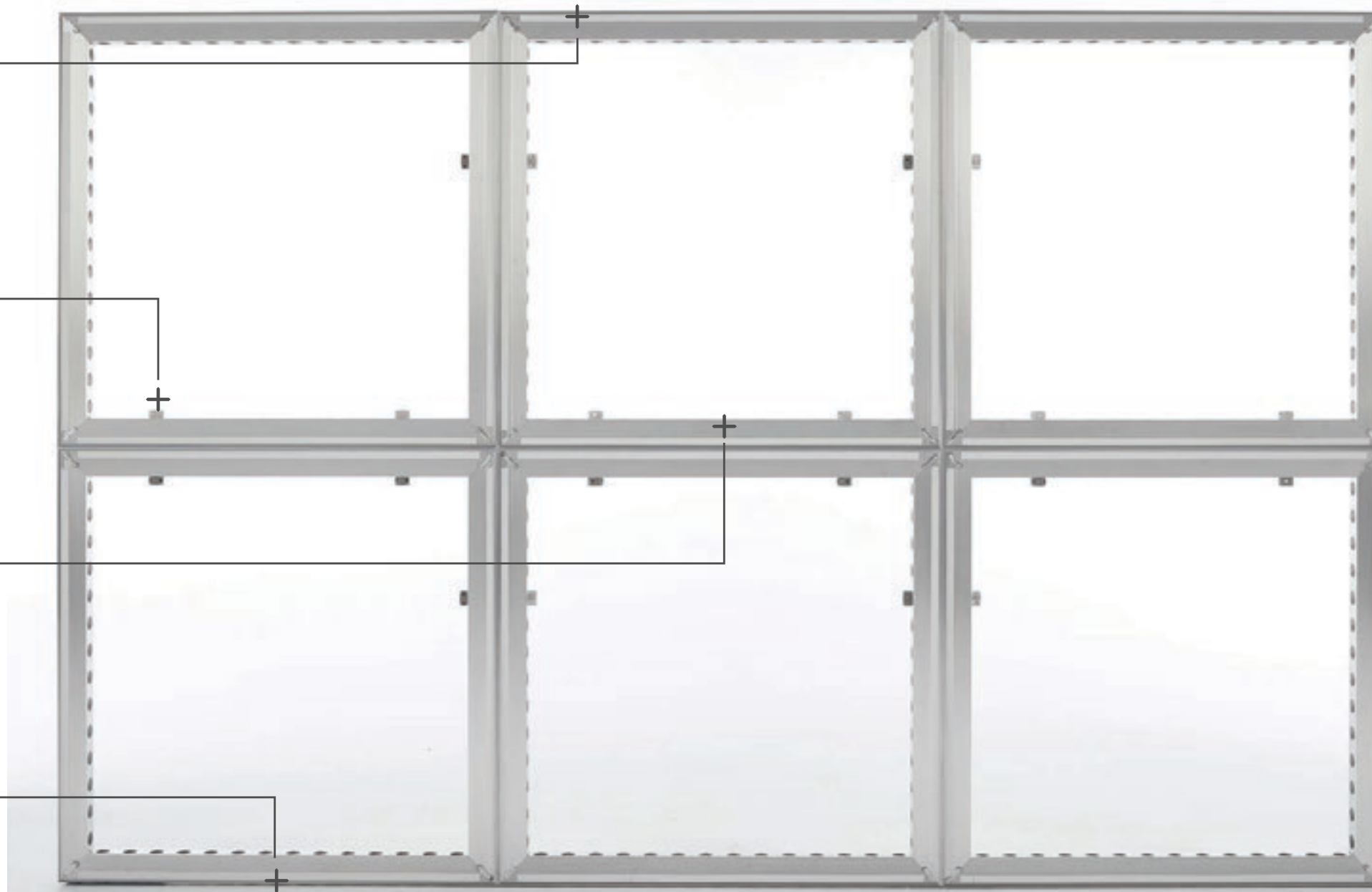
Tool-less
Connector D30



Hook and
Loop Tape



Eco Pin



The large hole design along each side of the frames is unique in the fact that it makes it readily and easily available to hide all types of electrical wiring through-out your exhibit for a clean and seamless look.

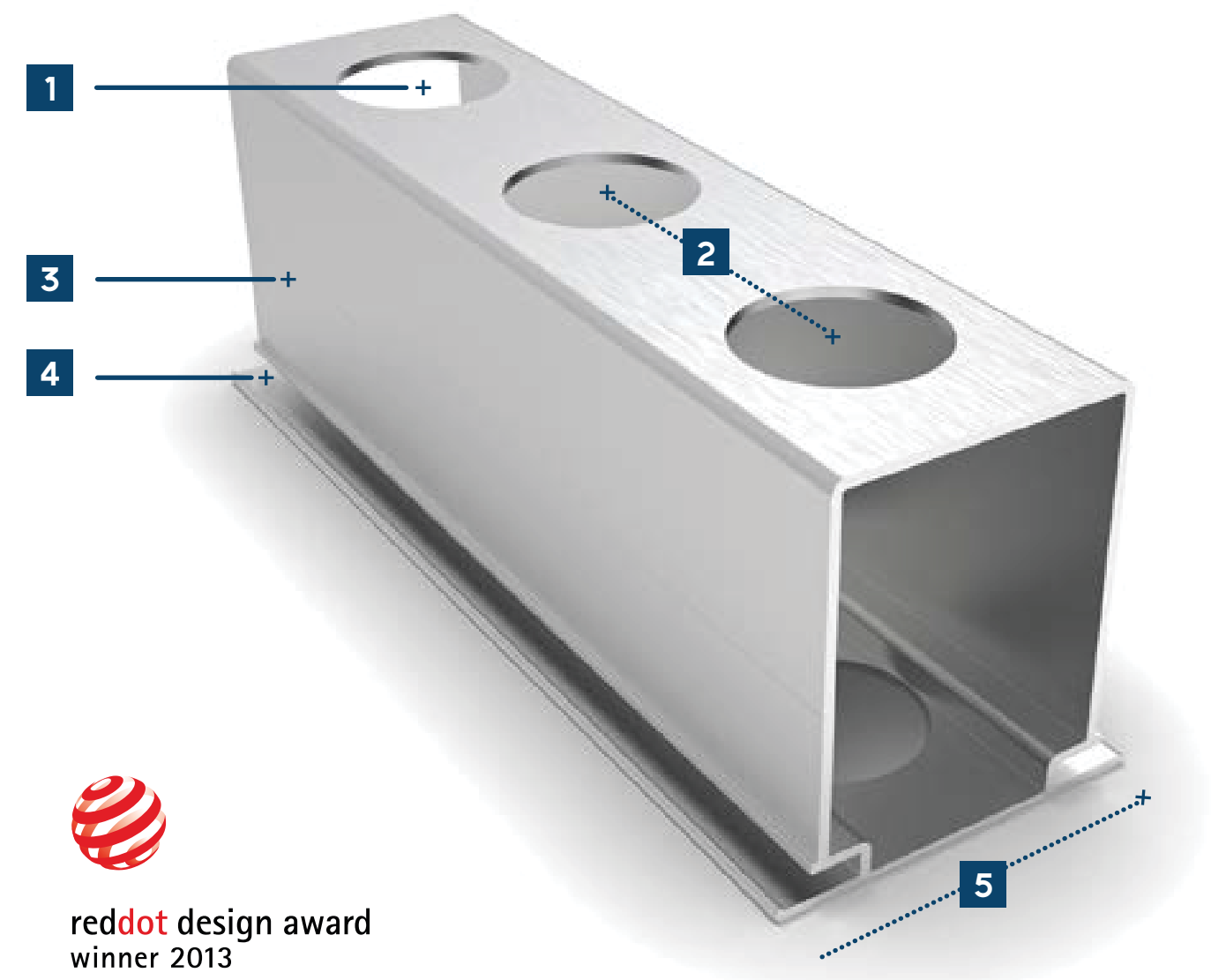
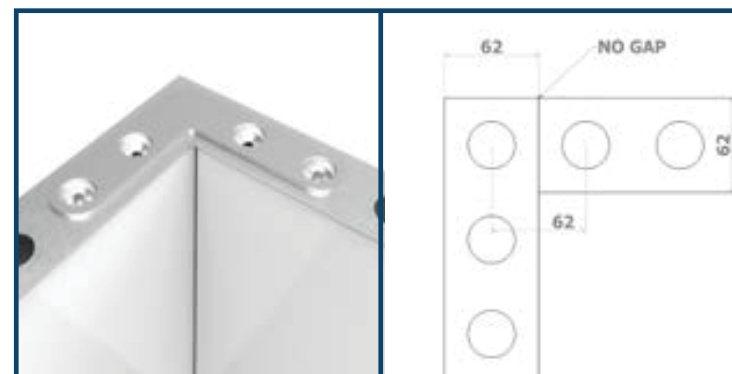


b62[®]

The b62 frame system has been based on a 62 x 62 mm matrix. The width, length and height of designs built using these frames are always multiples of 62.

This means each construction is always a perfect fit, in all directions and in any kind of combination you can think possible! They are available with or without slots for mounting textiles or panels.

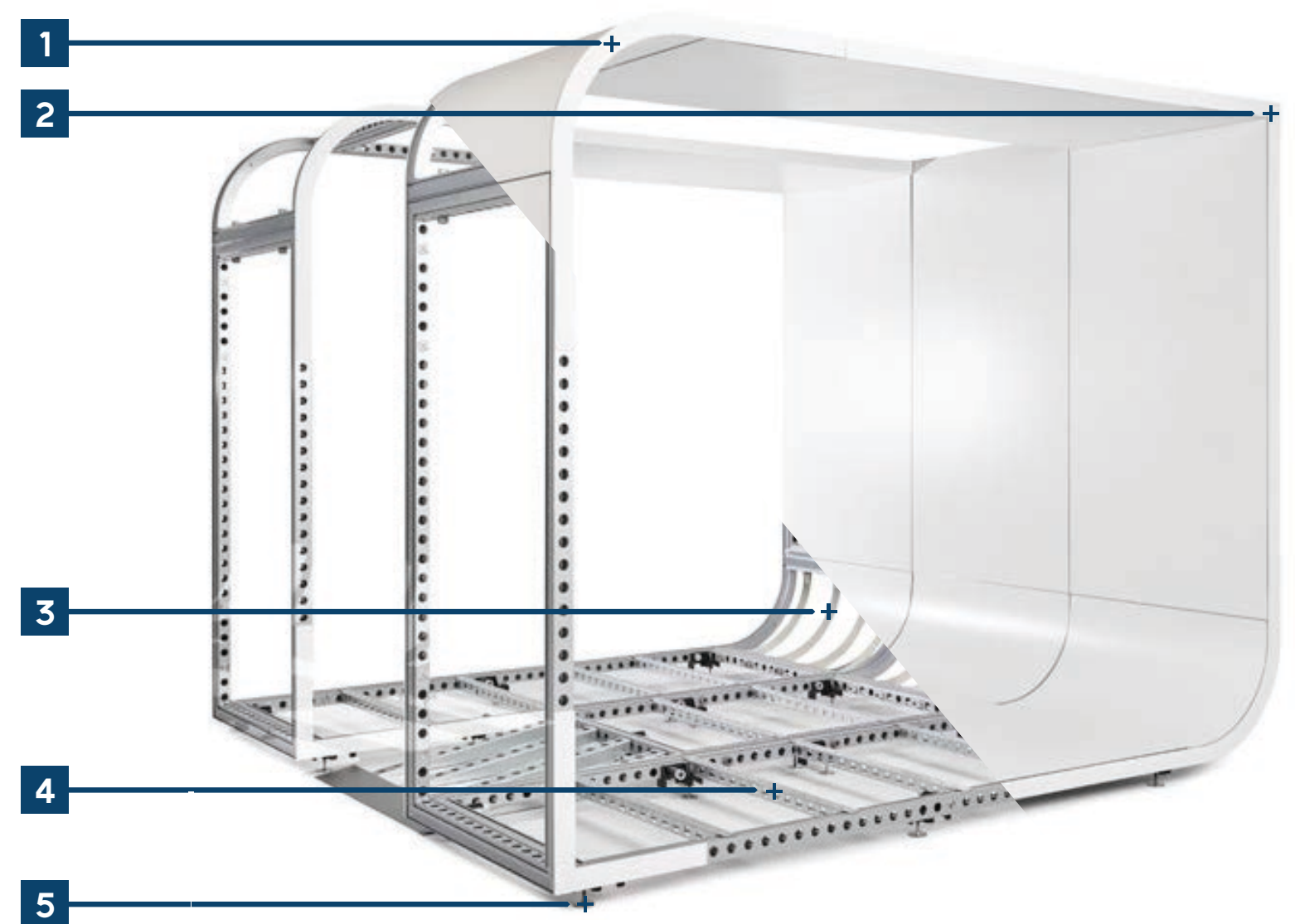
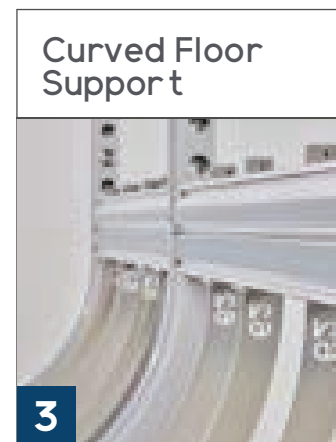
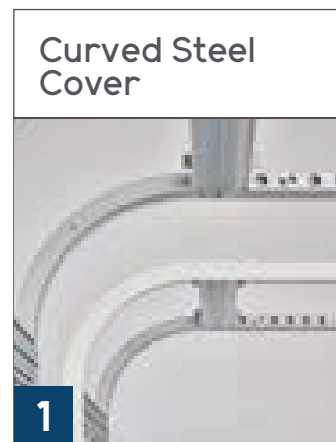
- 1** 30 mm connector holes
- 2** 62 mm
- 3** Surface to attach hook and loop tape (to mount panels)
- 4** Slots to mount textiles
- 5** 62 mm



reddot design award
winner 2013

360° Concept

The strong, light and modular aluminum frames can be assembled into a unique stand where walls, floor and ceiling harmoniously blend into one.



Doors

During a trade show or an event, you will more than likely need a storage space where you can safely keep your stock and other (valuable) objects.

The different types of doors in the beMatrix range allow you to lock your storage space or create a separate meeting space.

Pivot doors comes in a single, double or curved version, as well as two types of sliding doors at 8 feet tall.

Which ever type you choose, they all offer the benefit of being supremely user-friendly, for the stand builder as well as the exhibitor.

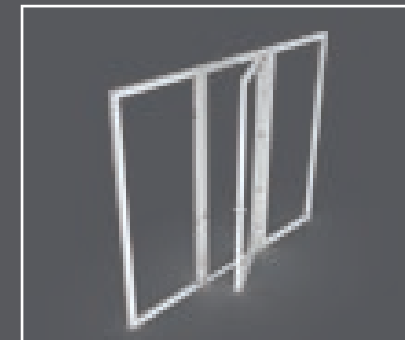
**Sliding doors are special order. Please consider 8-12 week lead time when ordering.*



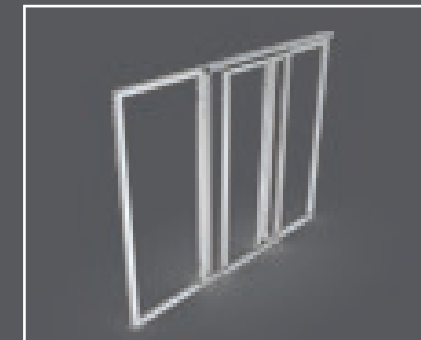
Door Frame



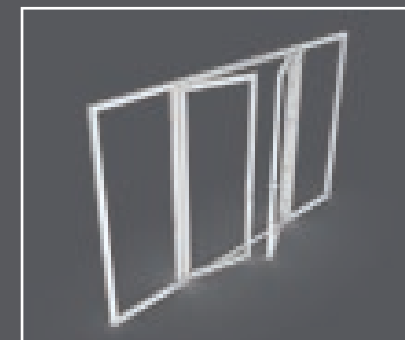
Curved Pivot Door



Pivot Doors



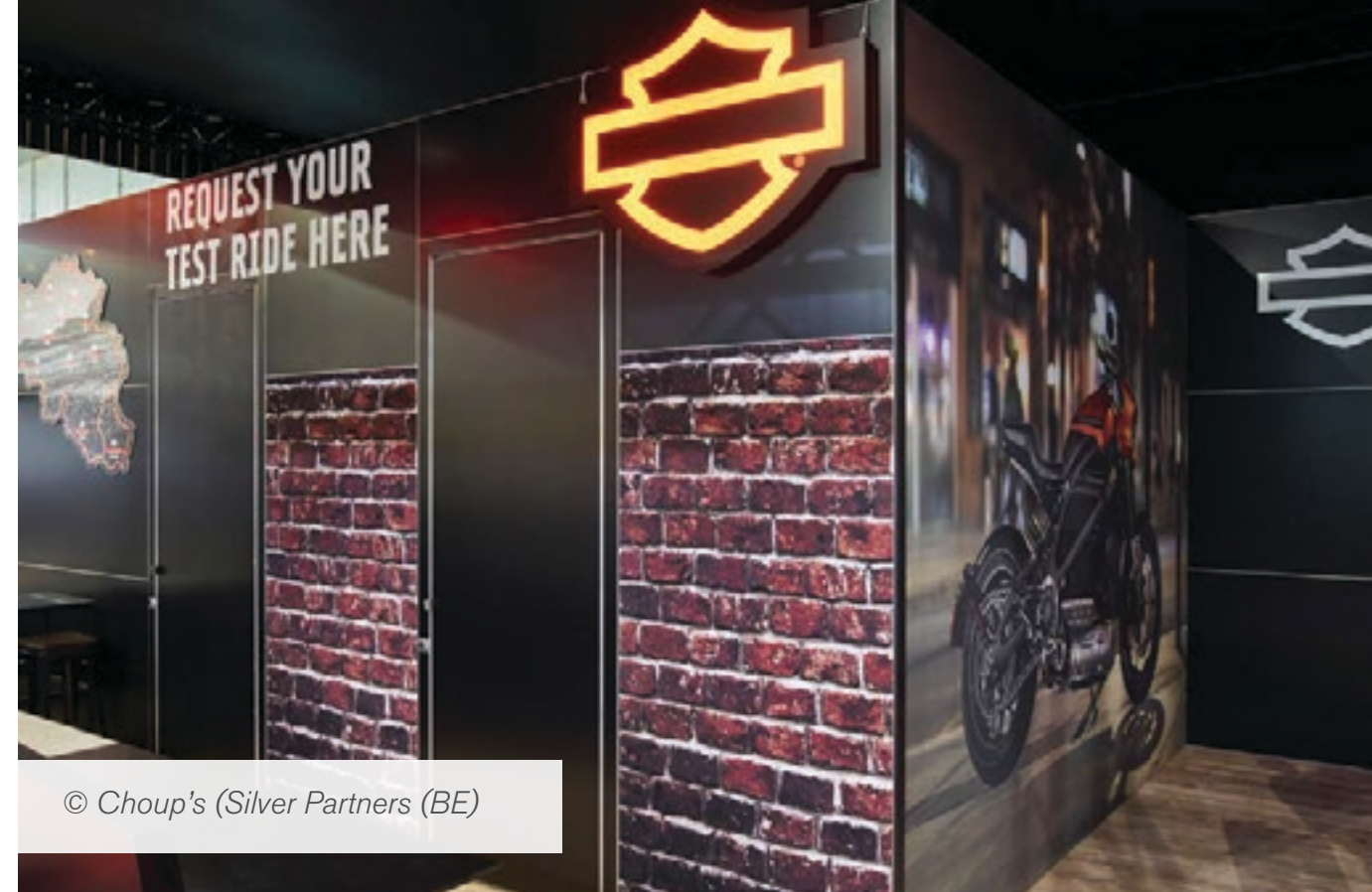
Sliding Doors



Double Doors



Pro Sliding Doors



© Choup's (Silver Partners (BE))



© La Sphere (FR)

Lighting

SAM Lighting

- Switch lighting from cold to warm light in one single switch
- Integrated LED modules revolve 340°

Track Light System

- Seamlessly integrated adjustable lighting system
- Compatible with existing track lighting systems

**EU-Track and electrical sold separately*

Big Light

- Flood lighting of large surfaces
- Easily mounted to beMatrix frame systems

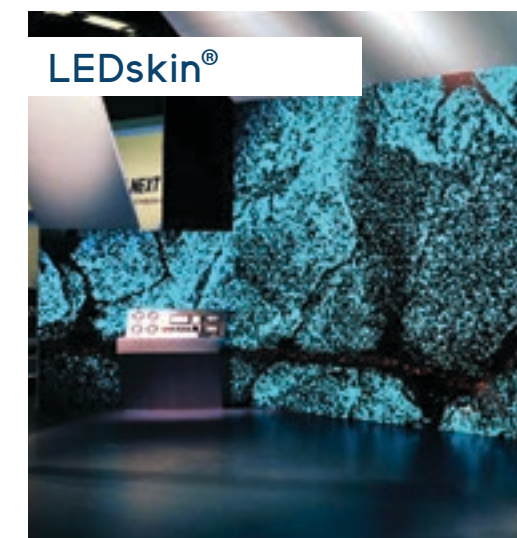
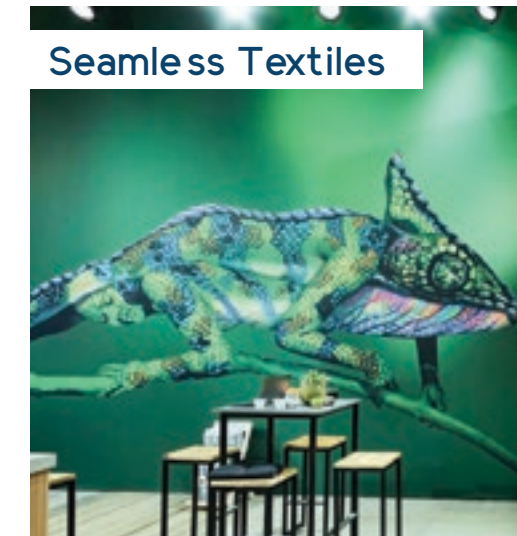




The Skins

Once the frame has been set up, your beMatrix construction is ready to be finished. You can choose to cover the frames with panels or textile, with or without prints.

Want to add some extra allure to your stand? Integrate a lightbox, or let your creativity loose with LEDskin®.





Panel Skins



Seamless Skins



LED Skins



LEDskin® brings about endless creative opportunities and guarantees fast building and a clean look of your design.

- Developed to be used indoors and custom made to be integrated in our existing b62 frame system
- Available in 3 pixel pitches: 1.9, 2.5 and 3.1 mm
- Options in straight, curved, and corner
- Compatible with both Mac and PC operating systems



Corner



Straight



Curved



Ready to Go Solutions

Kickoff Packs

Three different Kickoff Packs: **Start**, **Extra**, and **Delux**. All packs have been assembled based on our expertise, allowing you to build a variety of set-ups with just a small stock of material.

Lightweight Trolley

Our lightweight trolley can be used to easily transport the Kickoff Packs. The trolley is included in the Start Pack, but can also be bought separately.

10% Discount

A 10% discount is calculated in the gross price of the Kickoff Packs. Buying a pack is thus more profitable than buying all the pieces separately.

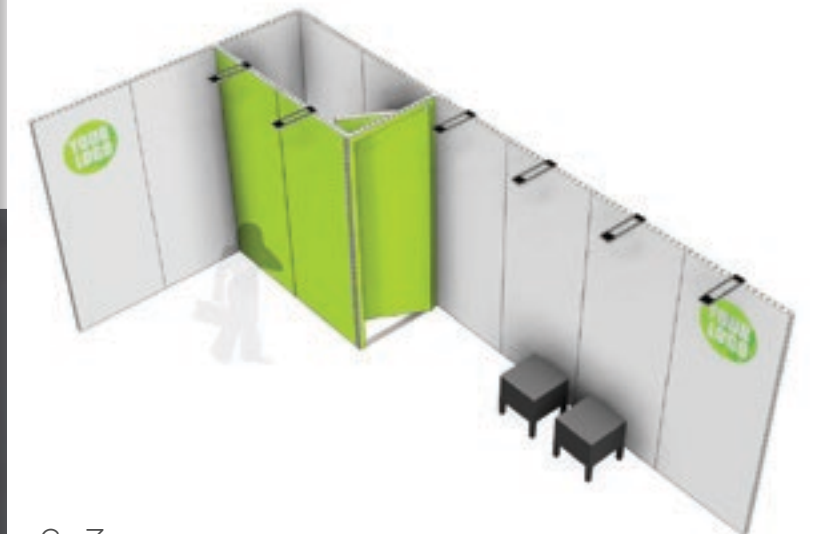
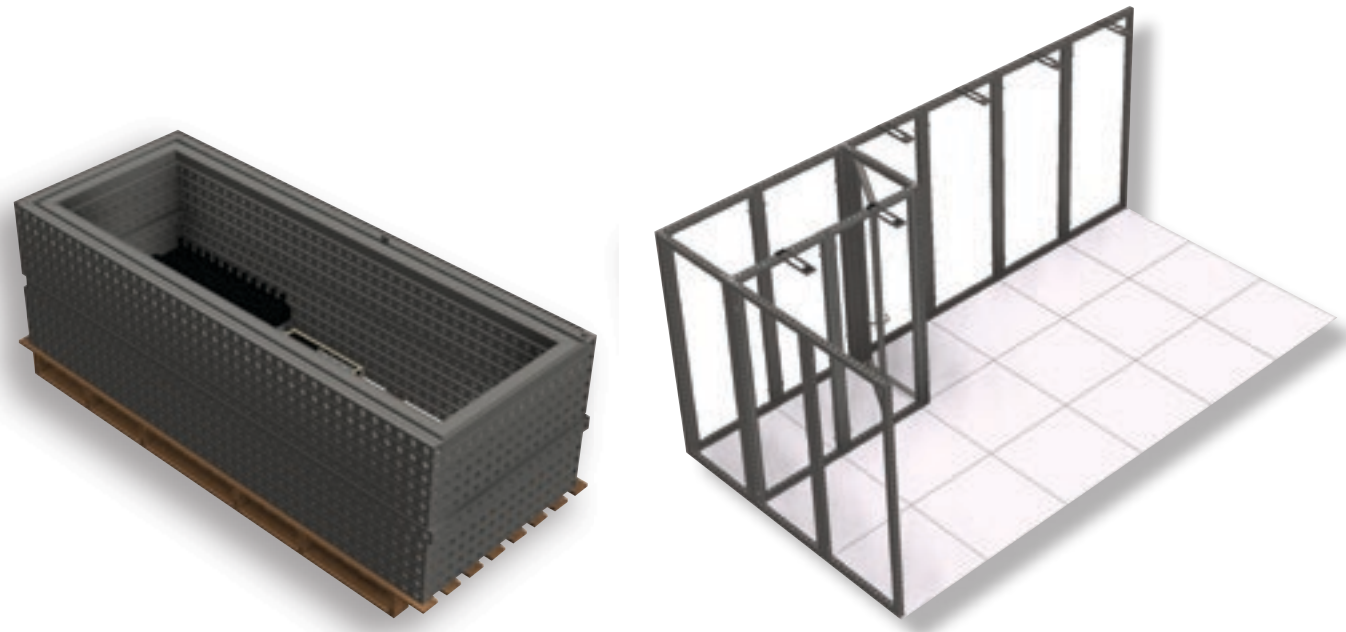
Rental Service

Our local service centers provide different rental solutions on short and long term and support you in urgent matters. Visit the website for an overview of products and Service Centers.



KICKOFF

Start Pack

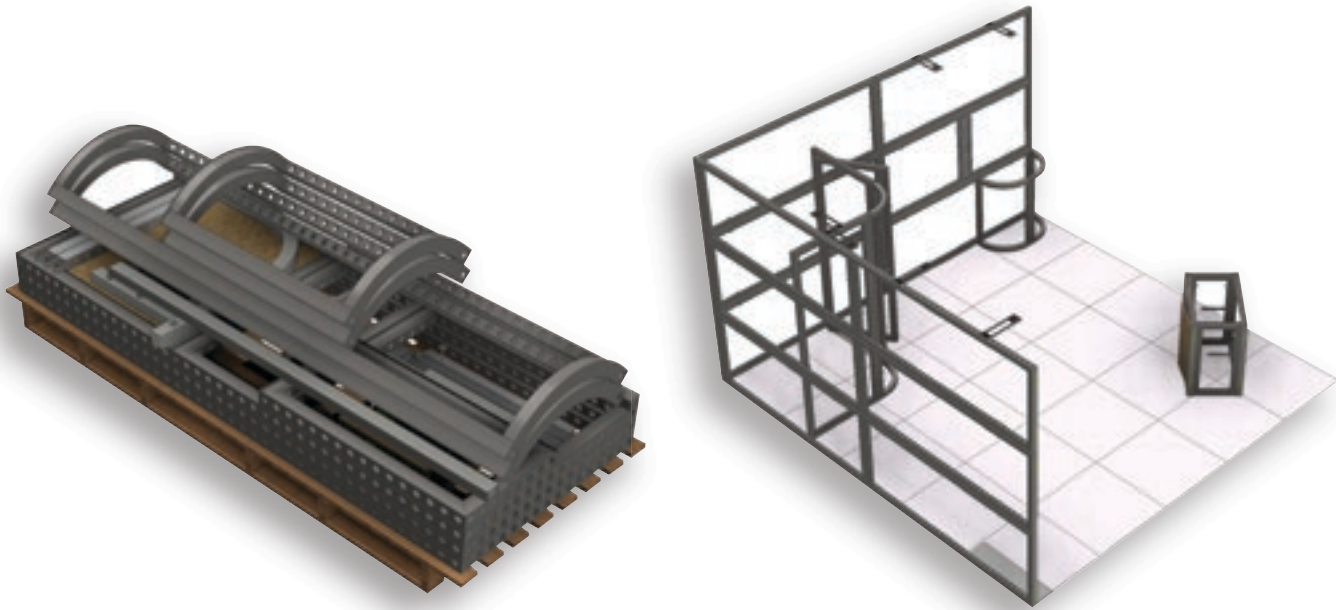


Included in Pack

- Straight frames
- Pivot door
- SAM lighting
- Basic set of connectors
- Trolley

KICKOFF

Extra Pack



4x4



3x6



5x4



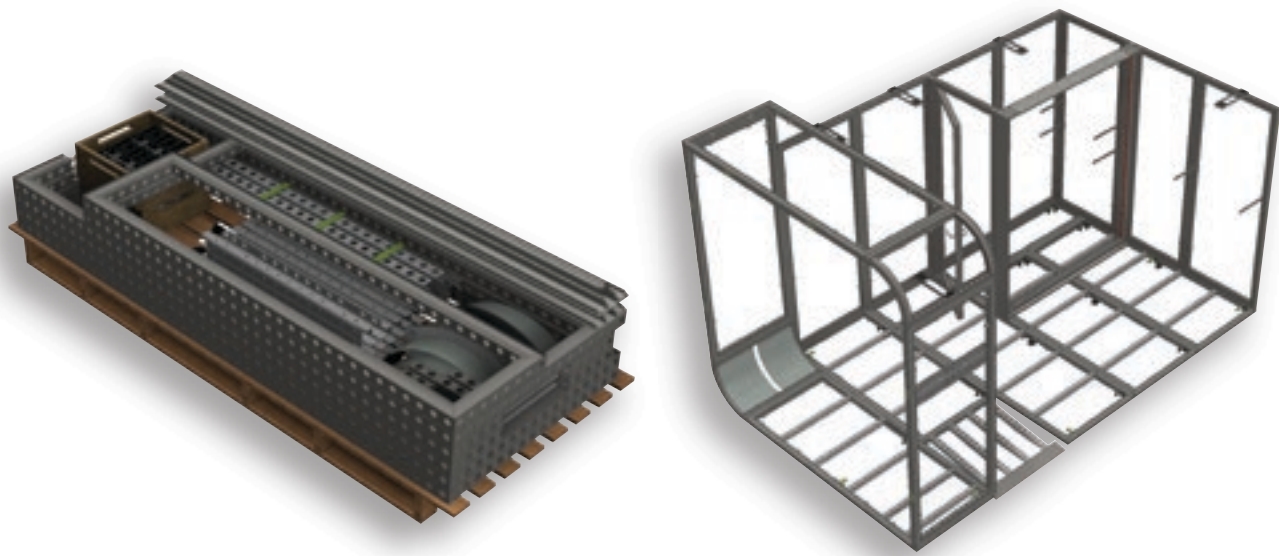
5x5

Included in Pack

- Straight frames
- Curved frames
- Small frames
- Pivot door
- SAM lighting
- Cover profiles
- Base plate
- Flat screen mount
- Shelf mount
- Basic connectors
- Trolley

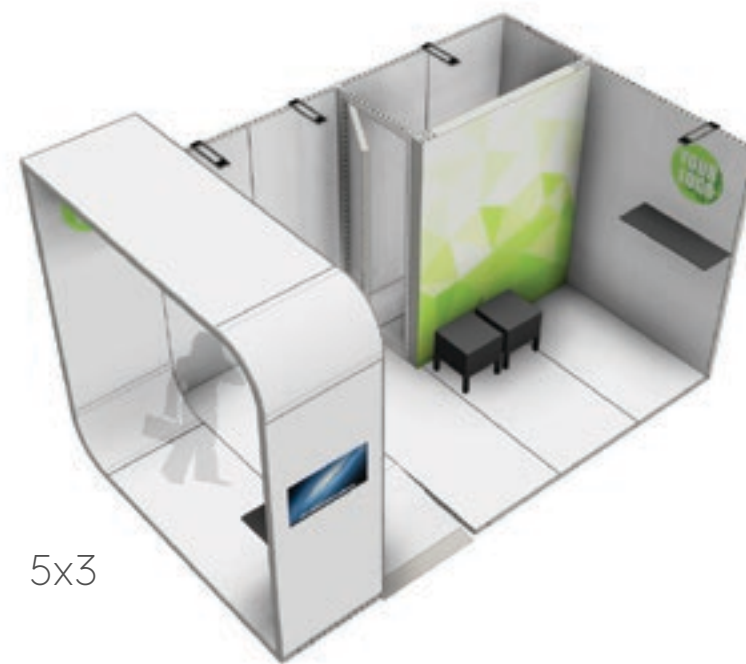
KICKOFF

Delux Pack

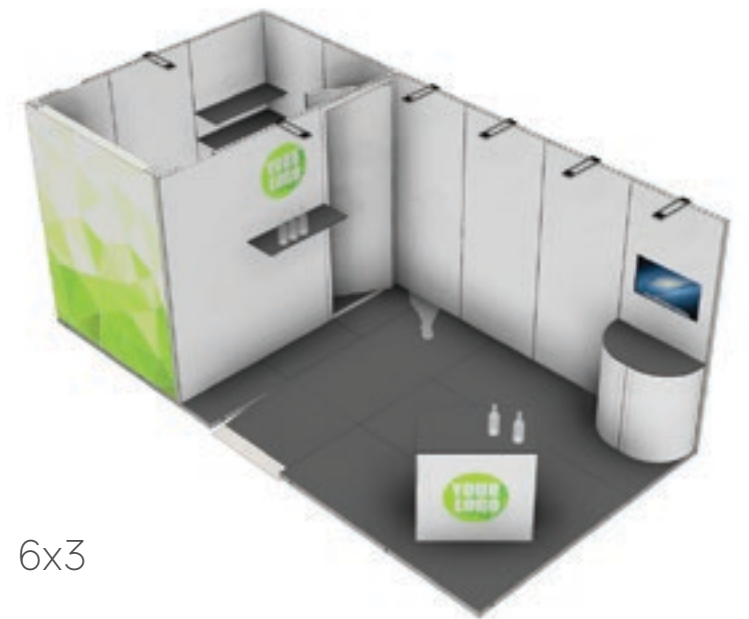


Included in Pack

- Different size frames
- LED lightbox
- Flooring (optional)
- SAM lighting
- Cover profiles
- Base plate
- Flat screen mount
- Shelf mount
- Basic connectors
- Trolley



5x3



6x3



5x4



9x4

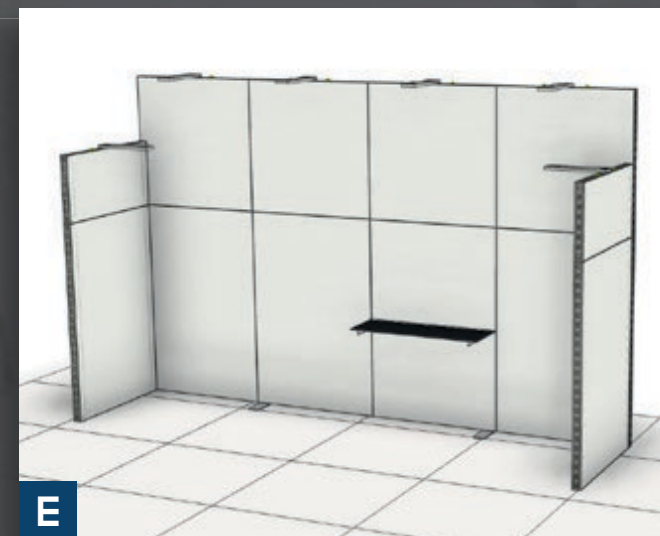
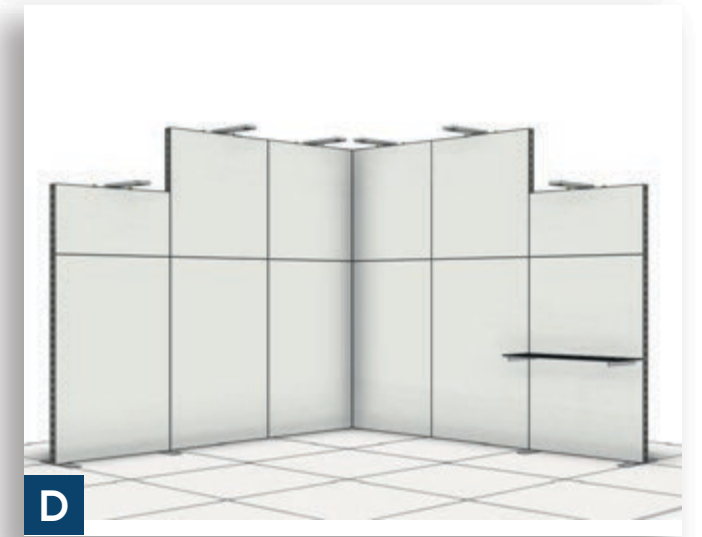
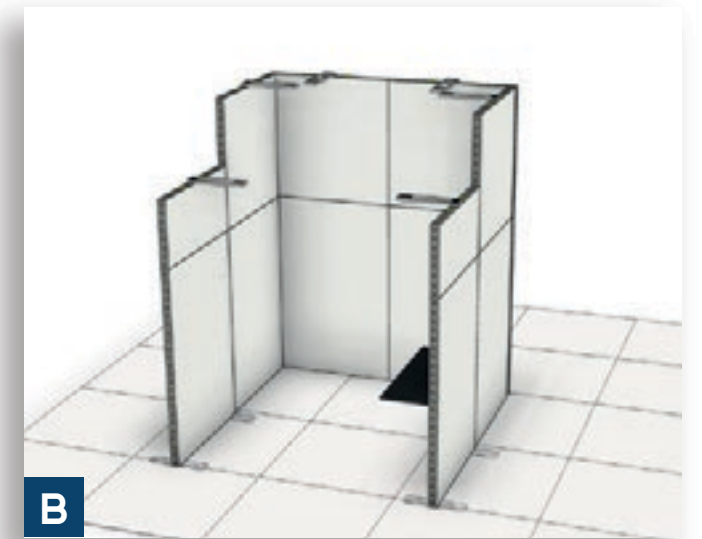
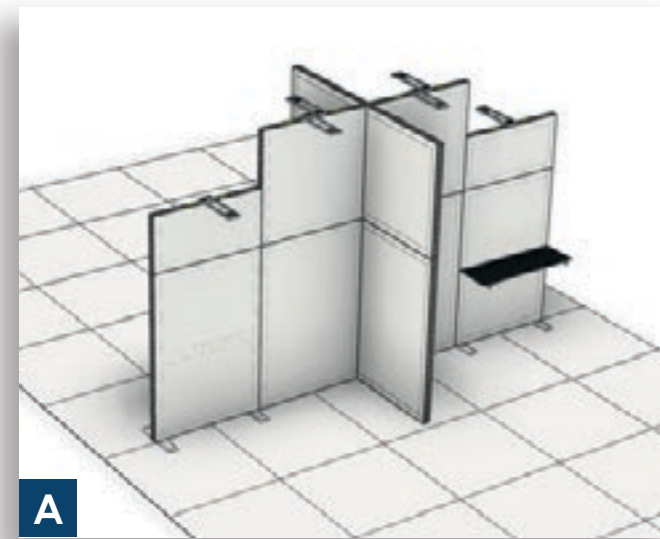
beCompact

Built specifically for the Meetings, Incentives, Conferences and Exhibitions (MICE) Industry. It allows users “keep the body and change the skin”.

- 6 different configurations, temporary or permanent
- 100% tool-less and unlimited re-usability.
- Quick & easy to build & dismantle by one person.

Included in Pack

- 12 aluminum frames
- 12 covers
- Base plates
- Flat screen mount
- 1 Shelf
- 6 SAM lights
- Small Trolley





A smart, stylish and easy to set up system that can be transported and built in minutes.

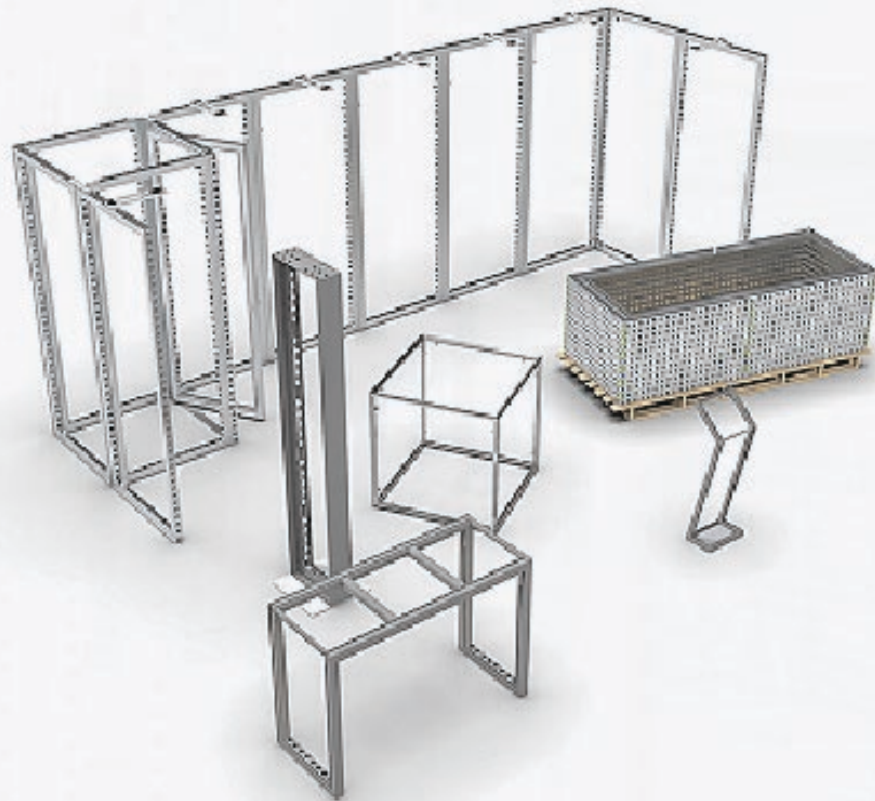


Hampton CES 2019



iZi Range

This is the modular furniture solution from beMatrix and includes bars, tables, displays and signage to add that final touch to your design. These have the same features as our frame system: it is ideal for temporary constructions, customizable with plain or printed panels or textiles.



IZI RANGE - FURNITURE

Bar

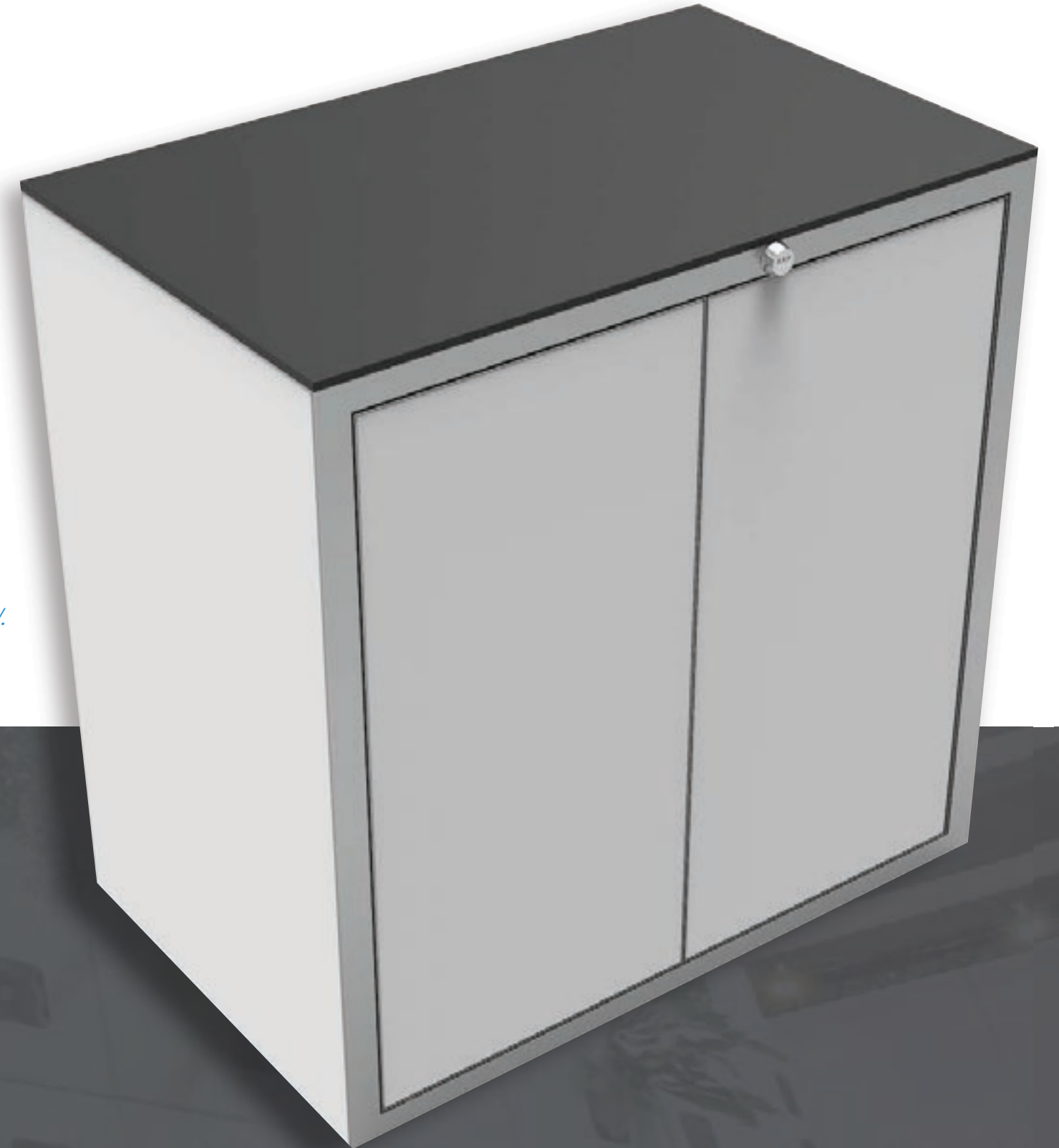
With doors



Without doors



Integrated Fridge
(fridge not included)



**This is a special order item. Please contact your sales representative for availability.*

Included in Pack

- (2) Shelves
- Doors with combination lock
- Adjustable feet up to 4 ft.

IZI RANGE - FURNITURE

Modular Elements

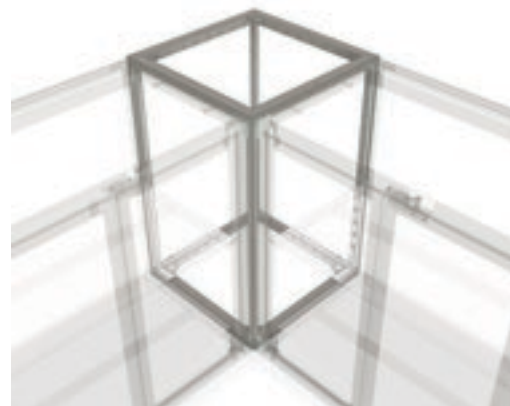
The iZi-range is based on the same DNA as the beMatrix frame system. Modularity and flexibility are pivotal. You can change the iZi-bar in no time at all into a different bar structure, simply by adding an additional modular elements.

**These are special order items. Please contact your sales representative for availability.*



1 Bar Fly

Add one or two barfly elements to the iZi-bar for a dynamic look. A real transformation, hardly any effort.



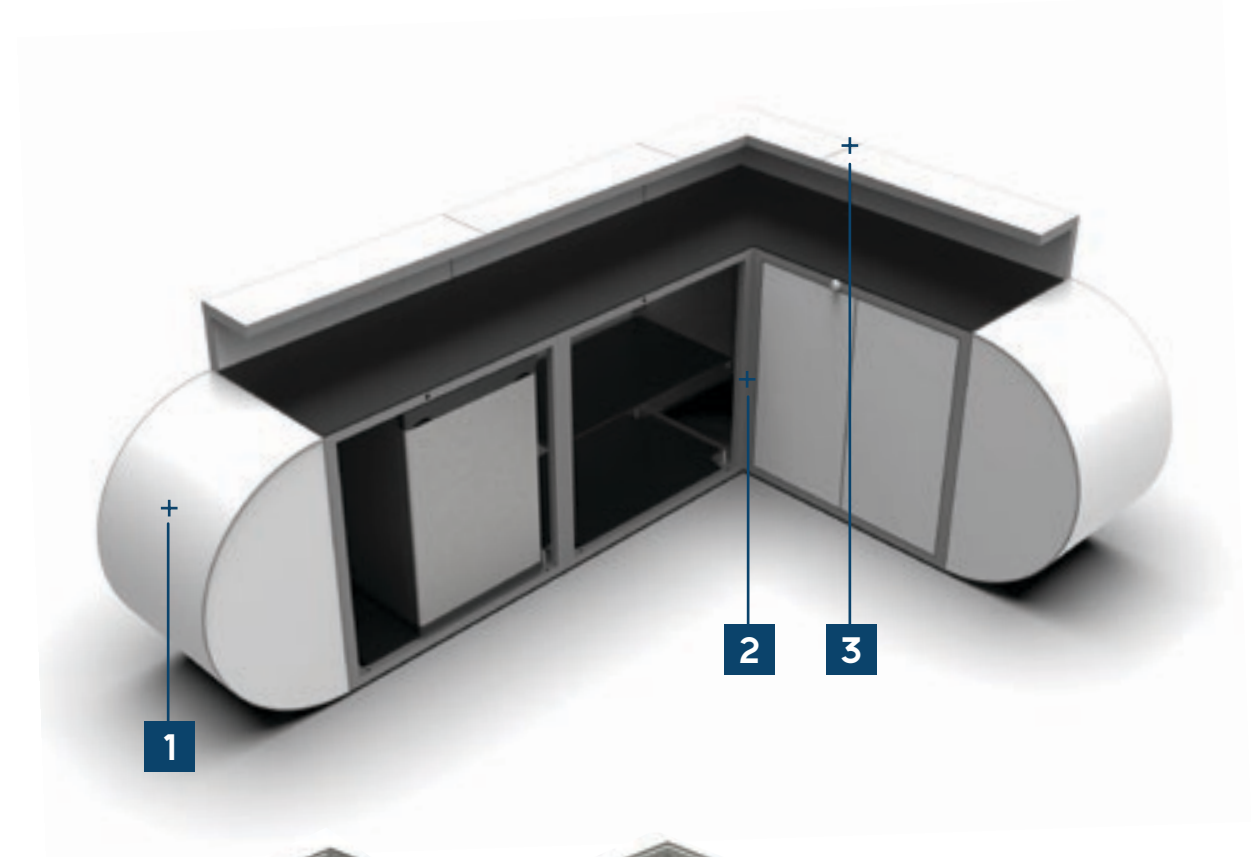
2 iZi-bar Corner

The iZi-bar Corner is a great solution to create the perfect corner, even elongating your bar. A perfect fit!



3 iZi-bar Elevation

Turn the iZi-bar into a free view of space of furniture. A handy add-on that is also available in a corner set-up to match the iZi-bar Corner.



IZI RANGE - FURNITURE

Bar

iZi-wall table

Dimensions: 620 x 620 x 1054 MM
Standard Finish: RAL 9006 TEC

iZi-high table

Dimensions: 1054 x 620 x 1488 MM
Standard Finish: RAL 9006 TEC

iZi-columns

Dimensions Small Column: 496 x 496 x 496 MM
Dimensions Large Column: 496 x 992 x 496 MM
Standard Finish: RAL 9006 TEC

**This is a special order item. Please contact your sales representative for availability.*





© Bulik Standbouw (BE)



© DesyTech (FR)

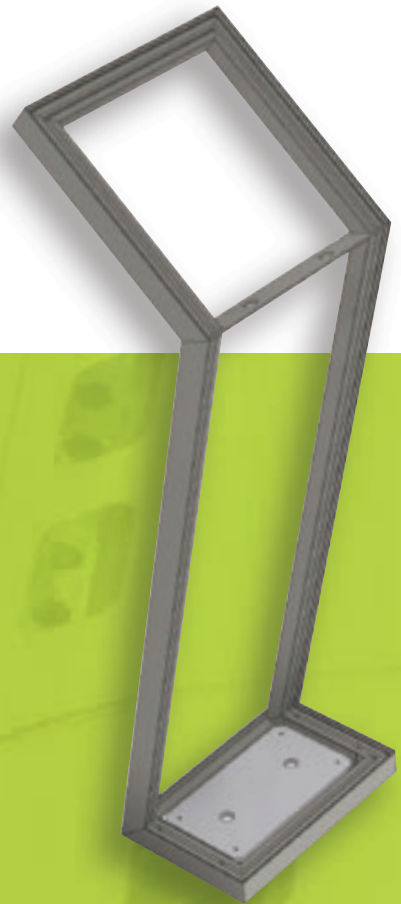


© Choup's (Silver Partners) (BE)

IZI RANGE - DISPLAYS

Tablet Holder

The iZi-tablet holder stands out with its minimalist look. Thanks to its savvy design providing space for cables and security accessories. The foam protection that covers the back keeps the iPad in position nicely, for optimal reading.



TIP: The plate with screw holes located at the base of the unit makes it possible to secure the iZi-tablet holder onto any raised floor



© Krypton (BE)

IZI RANGE - DISPLAYS

Boxscreens

The Boxscreens are solid hanging or standing constructions that help your stand grab attention. Minis are available in stock, but custom sizes are also available upon request.

Dimensions: 992 x 992 x 992 MM

Standard Finish: ANO

Included: Accessories

Not Included: SAM Light

**This is a special order item. Please contact your sales representative for availability.*





STONE
&STYLE
by EBEMA

STONE
&STYLE
by EBEMA

STONE
&STYLE
by EBEMA

STONE
&STYLE
by EBEMA

INSPIRATION
TERRAS EN OPRIET - POUR VOTRE JARDIN, TERRASSE ET ALLÉE

STONE
&STYLE
by EBEMA

IZI RANGE - SIGNAGE

Lightscreens

Available in small, medium, large or custom sizes, these light screens can be configured in a variety of ways from minimalistic to layered 3D effects.

Dimensions (small): 62MM - Built into walls

Dimensions (medium): 124MM - Freestanding

Dimensions (large): 186MM - Freestanding with internal wiring included

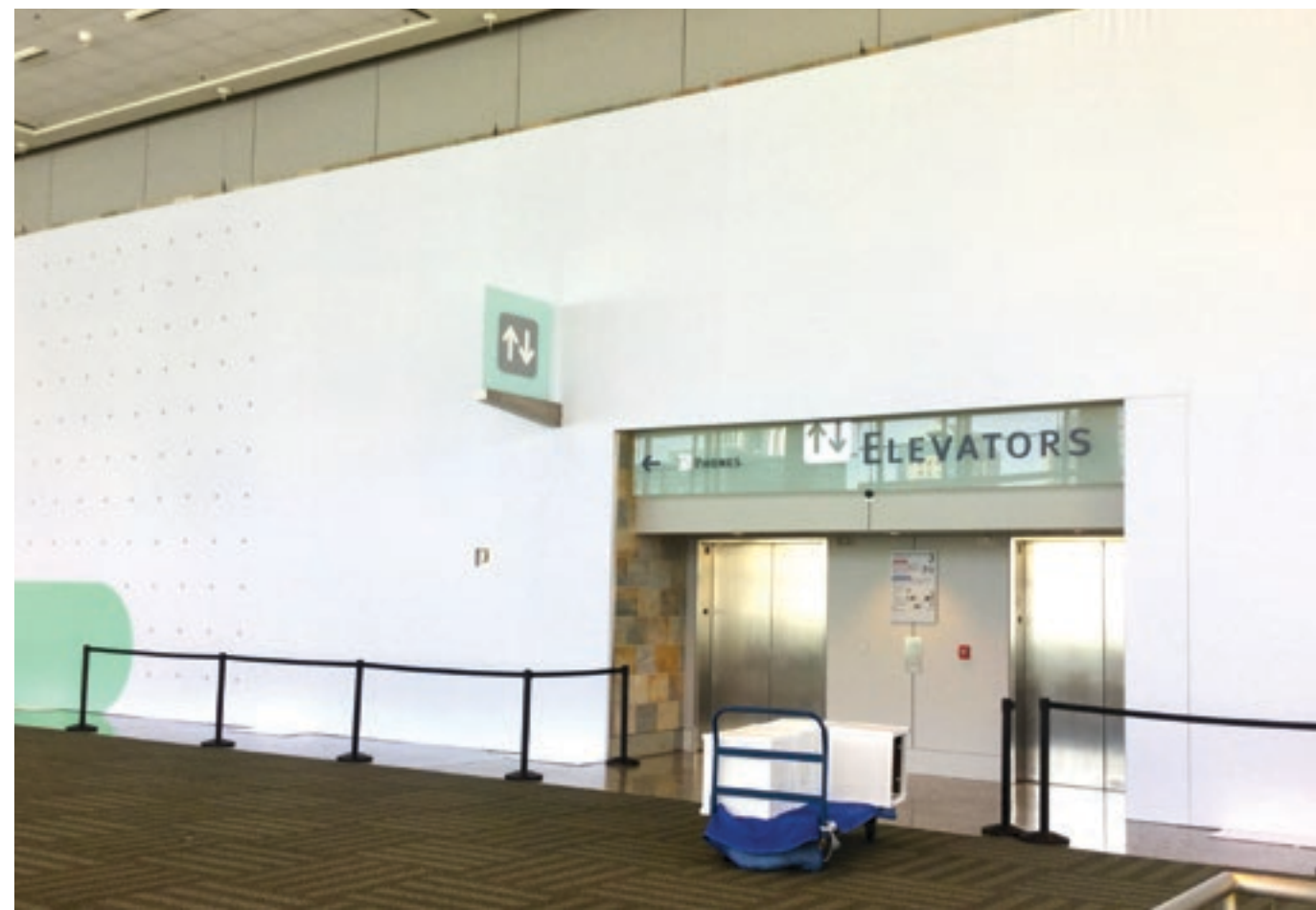
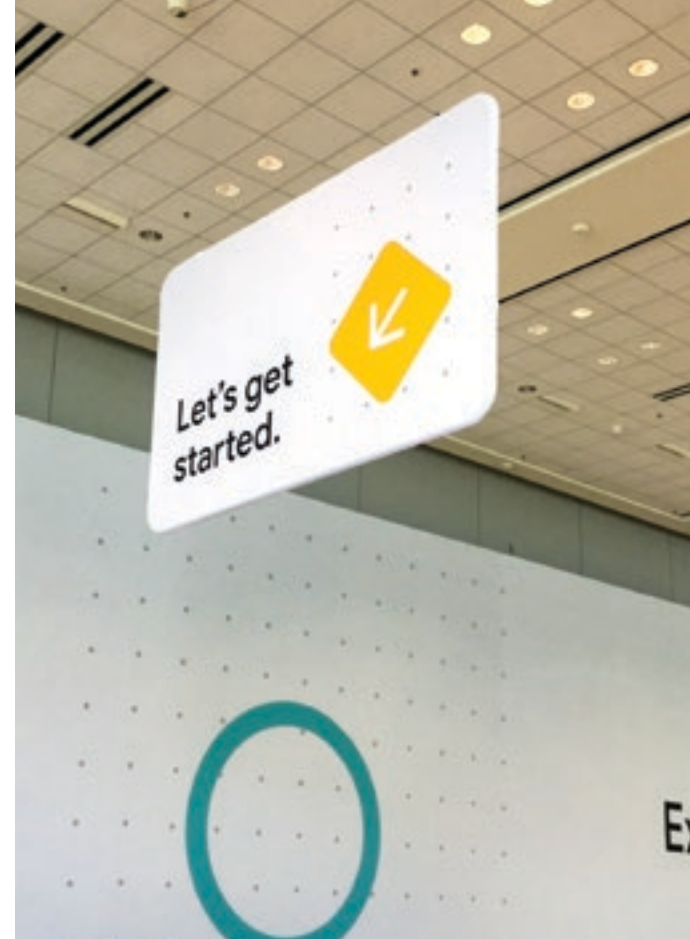
**Choose from Side LED or Back LED*



© Tailormate (BE)



Google Marketing Live 2019





Xtreme Solutions

The world of exhibit building never ceases to evolve. Exhibits become increasingly large in size, more conspicuous, with influences from the AV sector demanding more bearing capacity of the actual structures. With beTruss™, it's now possible!



Xtreme Solutions

Double Deck

Configuration 1

Small: 18m² (5,7 x 3,2m)



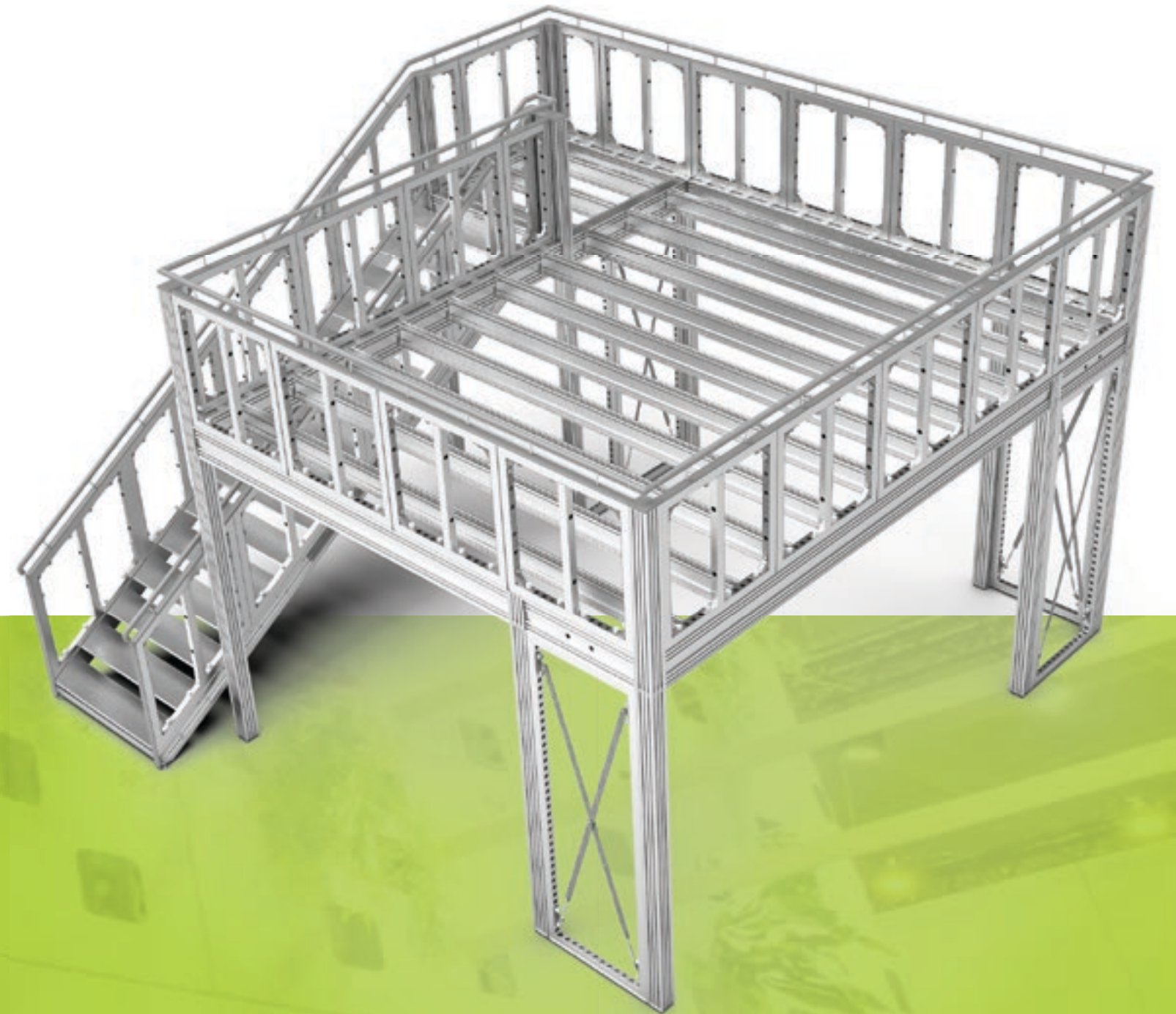
Configuration 2

Medium: 24m² (5,7 x 4,2 m)

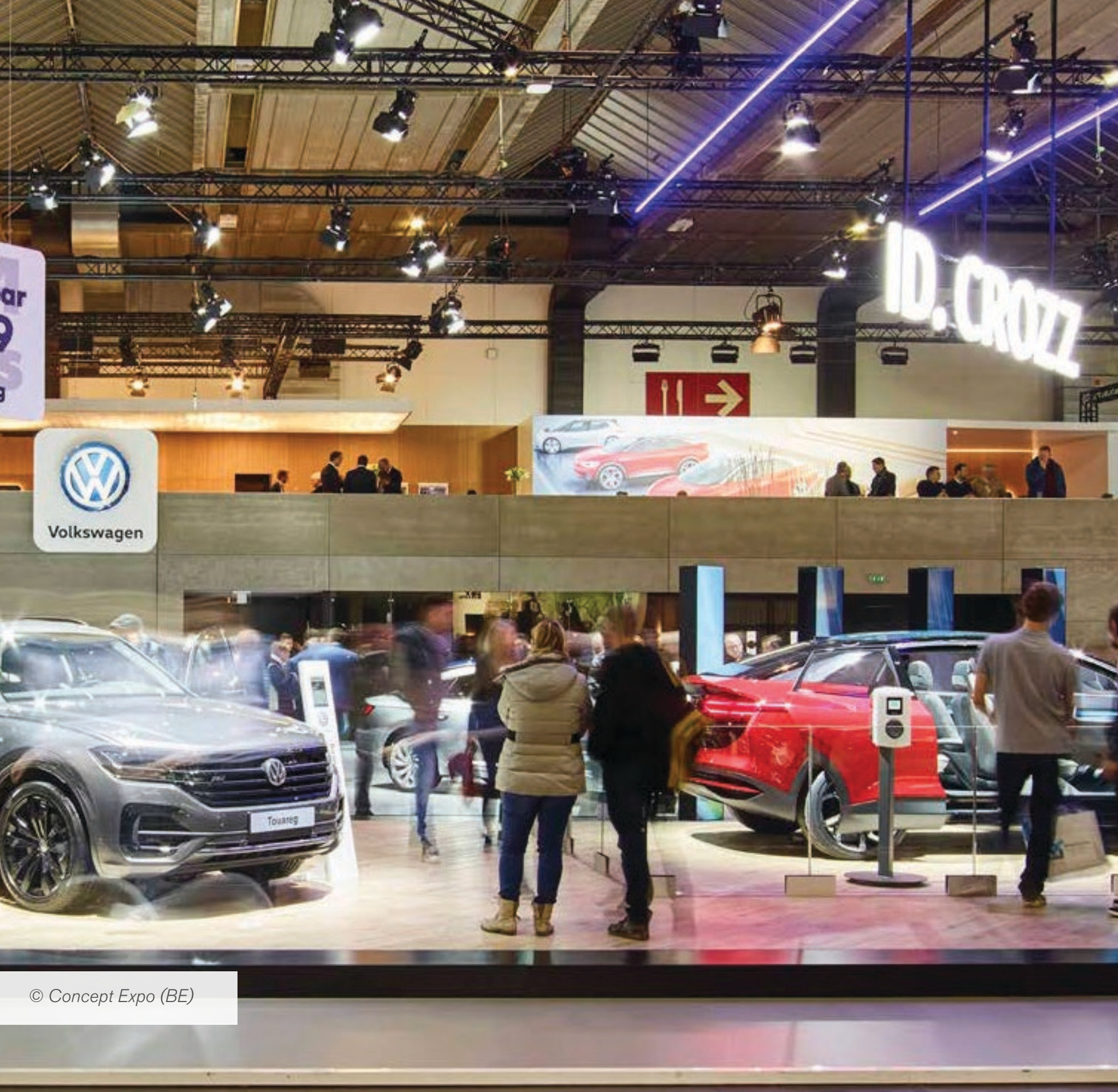


Configuration 3

Large: 30m² (5,7 x 5,2 m)



beMatrix's double deck system allows you to get everything out of your design surface and increase your square footage.





Pop Solutions

We go next level with interior retail design, road shows and live streaming with our new innovations, Pop-IN and Pop-OUT.

**pop-IN and pop-OUT solutions available in 2022*



POP SOLUTIONS

Pop-IN

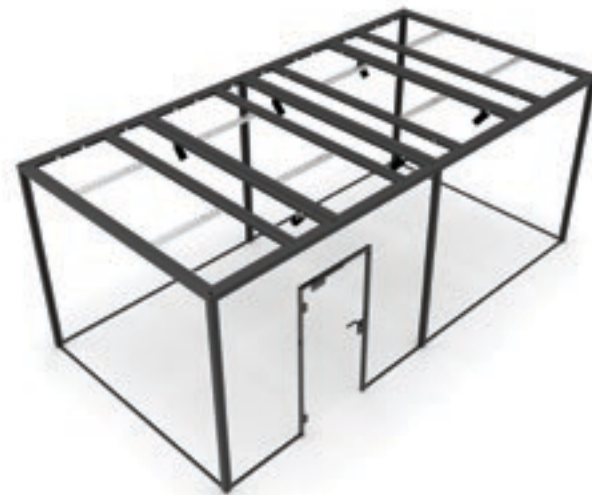
Pop-IN is a flexible concept for indoor pop-up activities.



3x3

Dimension: 3100 x 3100 x 2480 MM

Inlcuded: Ceiling, tracklight and (2) lights,
door with door pump, and digital lock



6x3

Dimension: 3100 x 3100 x 2480 MM

Inlcuded: Ceiling, tracklight and (2) lights,
door with door pump, and digital lock



Customize it however you see fit
for your brand to really POP!



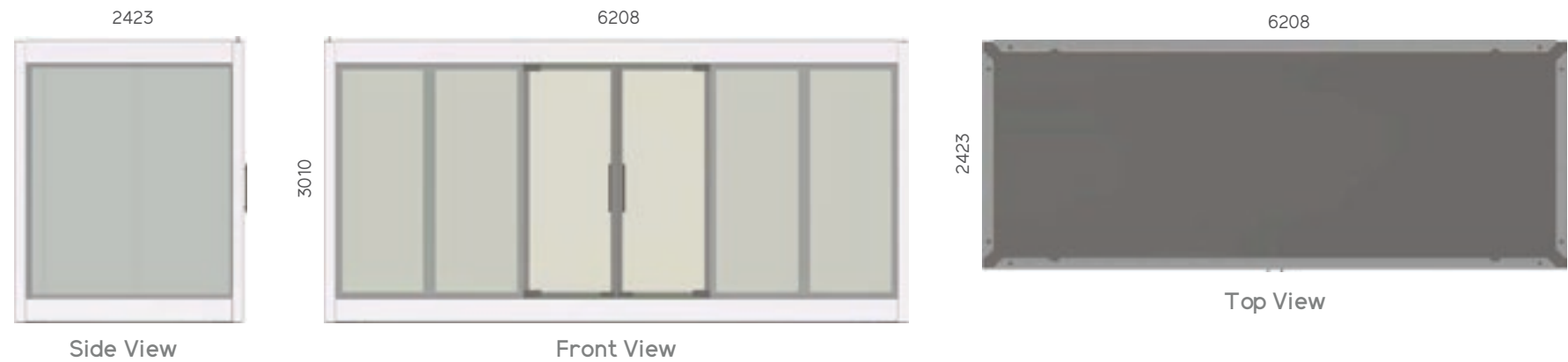
Pop-IN's elements are fully compatible with existing beMatrix frame system letting you integrate pop-IN into your next event or exhibit design.



POP SOLUTIONS

Pop-OUT

pop-OUT is a flexible product for outdoor pop-up activities.



Dimensions Outside: 6208 x 2423 x 3010 MM

Color: RAL 9006

Dimensions Inside: 5960 x 2170 x 2480 MM

Optional: Glass sections & double doors



pop-OUT open basic set (floor, poles and ceiling)



Complete pop-OUT set for 3 sides of glass (2 short sides and 1 long side with double door), 1 long side with frames and ceiling frames. Glass not included.



Complete pop-OUT set with 3 sides of glass (2 short sides and 1 long side with double door), 1 long side with frames and ceiling frames. Glass included.

Plan for Electrical

The Pop-OUT is delivered without electrical wiring. The structure has necessary holes and space to offer full flexibility in where you place wiring in the floorplate, beams and ceiling plate. Create a perfect finish with beMatrix frames or panels and textiles.



The 8 beMatrix Principles



Quality Guaranteed

All beMatrix frames are manufactured in-house, so we are in control of every step in the production process. Continuous optimization and innovation initiatives ensure the system always complies with the market's demands.



Freedom to Design

beMatrix combines the benefits of a modular system with the possibilities of a made-to-measure solution. Almost any shape, contour and design is conceivable and can easily be created.



Top Finishing

The beMatrix system comes with a large range of tools and accessories to finish your design exactly the way you envisioned it. With the infills, the 'skin', you can even hide entire frame system so it becomes invisible to the eye. Thanks to our 'seamless' concept, not one seam will be noticeable.



Lightweight

The aluminum frame system is lightweight, ergonomic, and eco-friendly. The builder doesn't need to haul heavy structures, meaning lower transport costs and CO2 emissions.



Fast

Assembly and disassembly of the beMatrix system is quick and easy. Its weight, simplicity and tool-free assembly save loads of time, letting you focus on the finishing details of your design.



Long Life Cycle

Our frame can be used up to 200 times, in all kinds of configurations. This long lifespan lowers our demand for raw materials and energy, since less new frames need to be manufactured.



Ecologically Sound

The system is extremely sturdy, making it endlessly reusable. Wear and tear won't shorten its lifespan, since the frame is not visible to the eye once the entire stand is set up.



International Network

beMatrix has 3 production sites worldwide and several service hubs across the world, so we offer support close by, wherever you are. The bePartner network brings together real ambassadors of the beMatrix frame system, each with their own expertise: exhibit building, textile printing, LEDskin®. A creative cross-pollination offering you as our client nothing but benefits.

Envision with us.

For more information,
Please contact us at 949-586-7665
or email us at info@imageoptions.net

